

# Meadow Grange

Willow Road, Barrow Upon Soar, Leicestershire, LE12 8HZ

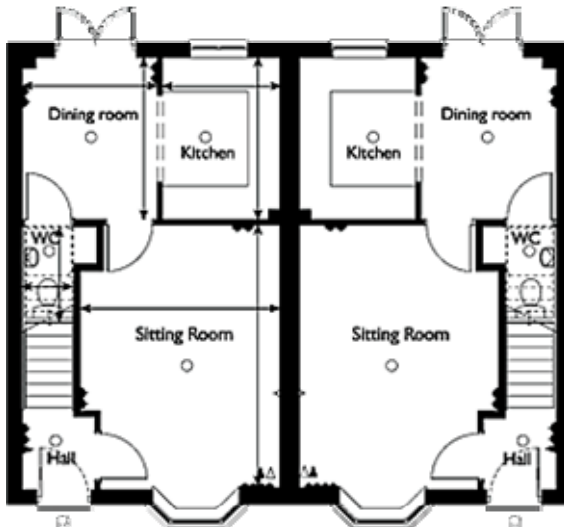
In a semi-rural location in the village of Barrow upon Soar this carefully designed development offers top quality, affordable two bedroom apartments and houses as well as three, four and five bedroom homes. Close to the local train station and within a short drive of the M1

## Plot 23 - Hyde1



3 Bedroom Mid-Terrace House,  
Parking Space, Ensuite, Kitchen /  
Family Dining Room, Cloak Room  
Carpets and Vinyl

### Floor plans Ground floor



### Room dimensions

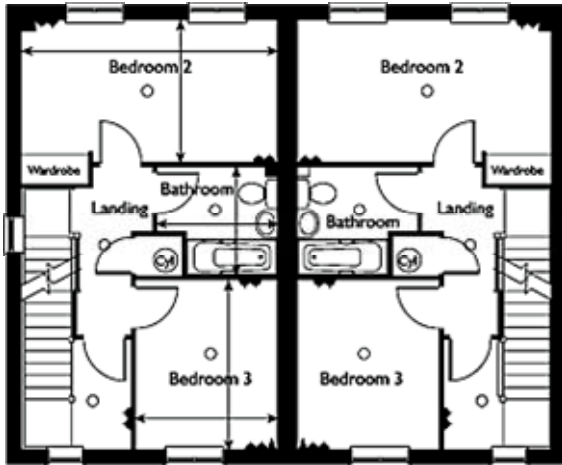
Dining Room - 2950 x 2450 /  
9'10" x 8'0"

Kitchen - 2950 x 2135 / 9'10" x  
7'0"

Sitting Room - 4850 x 3665 /  
15'10" x 12'0"

Wc - 1700 x 920 / 5'6" x 3'0"

## First floor



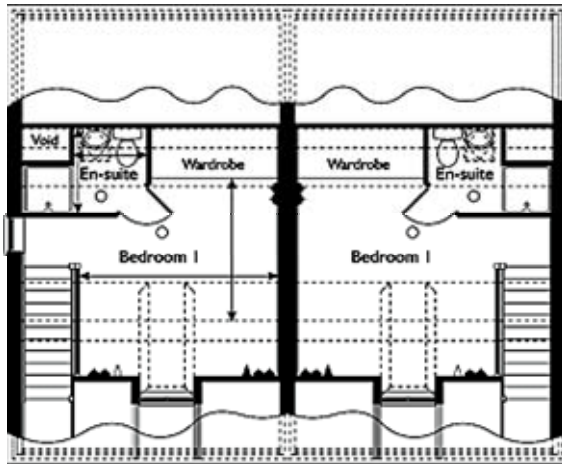
## Room dimensions

Bathroom - 2241x2050 /  
7'4"x6'8"

Bedroom 2 - 4735 x 2625 /  
15'6" x 8'7"

Bedroom 3 - 3125 x 2649 /  
10'3" x 8'8"

## Second floor



## Room dimensions

Bedroom 1 - 3701 x 2667 / 12'1" x  
8'9"

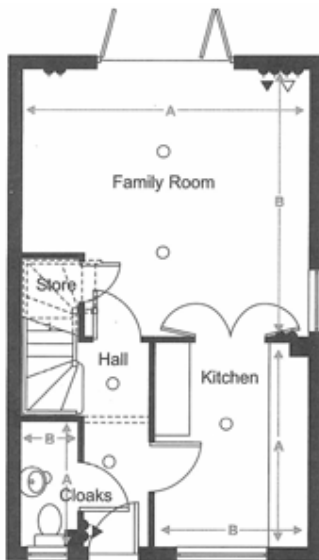
En-suite - 1600 x 1366 / 5'3" x 4'5"

The house plans and the room specifications may vary and are provided for general guidance only. Please contact a sales advisor for plot specific details.

## Plot 39 – Winchester



3 Bedroom End-Terrace House,  
Single Detached Garage Shared in  
Block with Plot 42, Ensuite,  
Kitchen/Family Breakfast Room,  
Cloak Room Includes carpets and  
landscaping.

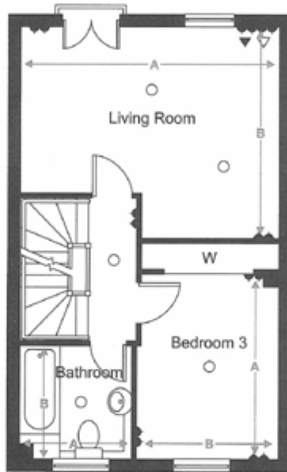


### Room dimensions

Cloaks - A 2085 x B 950 / A 6'10" x  
B 3'1"

Family Room - A 4950 x B 4550 / A  
16'3" x B 14'10"

Kitchen - A 3470 x B 2622 / A 11'5"  
x B 8'7"

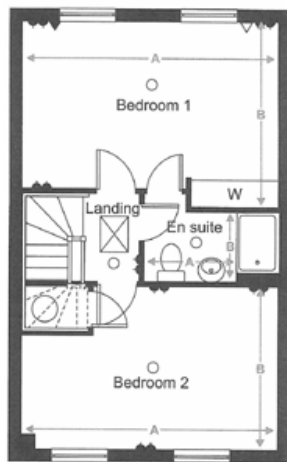


Room dimensions

Bathroom - A 2125 x B 2110 / A  
7'0" x B 6'11"

Bedroom 3 - A 3470 x B 2750 /  
A 11'4" x B 9'0"

Living Room - A 4950 x B 4060  
/ A 16'3" x B 13'4"



Room dimensions

Bedroom 1 - A 4950 x B 3570 /  
A 16'3" x B 11'9"

Bedroom 2 - A 4950 x B 3110 /  
A 16'3" x B 10'2"

En-suite - A 2710 x B 1400 / A  
8'11" x B 4'7"

## How to find us

Willow Road, Barrow Upon Soar, Leicestershire, LE12 8HZ



## Directions

From the North: From M1 exit left at j24. At r/about take 2nd exit A6. Turn left A6006. Turn right A60 Loughborough Rd, turn left B676 Barrow Rd. Turn right Cotes Rd. From the South: From M1 exit J21a. Continue onto A46. Continue onto slip rd. At r/about, 1st exit A6. At r/about 2nd exit onto A6, bear left on slip rd. At r/about 1st exit Barrow Rd. At r/about 1st exit, High St. Turn left into Cotes Rd. From the East: From A607 Melton Rd bear left onto A46. Follow signs A6 Loughbro, then as per South. From the West: From M1 exit j23. Take 3rd A512. At r/about take 1st exit A512. At r/about 2nd exit A512 Ashby Rd. Turn right A6, bear left on slip (B589) turn left out A60, as North